



ČESKÉ
VYSOKÉ
UČENÍ
TECHNICKÉ
V PRAZE



Driver-car Interaction and Safety Conference
16-17th June 2016, Prague

Model CAR Transport System - Modern ITS Education Tool

Karel Bouchner

Model Car Transport System

Represents:

- **laboratory** intended for a practical development in the area of the motor traffic
- important **education tool** for student's hands-on training, enabling students to test results of own studies

Model Car Transportation Network

Main part:

- **model in a ratio 1:87 (HO)**, based on components of FALLER Car system, e.g.

– cars



– traffic lights



Model Car Transportation Network

- parking spaces



- stop sections



- branch-off junctions



- sensors



Model Car Transportation Network

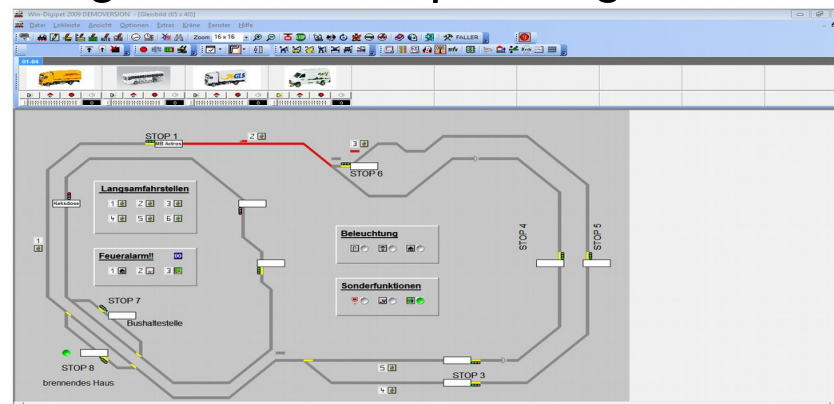
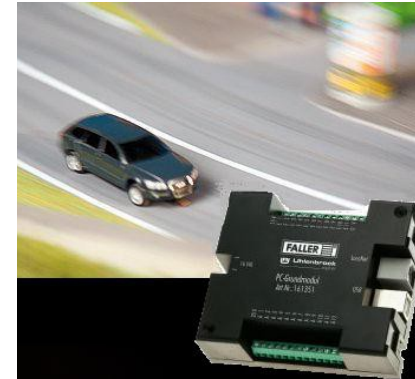
– control sections

- HW

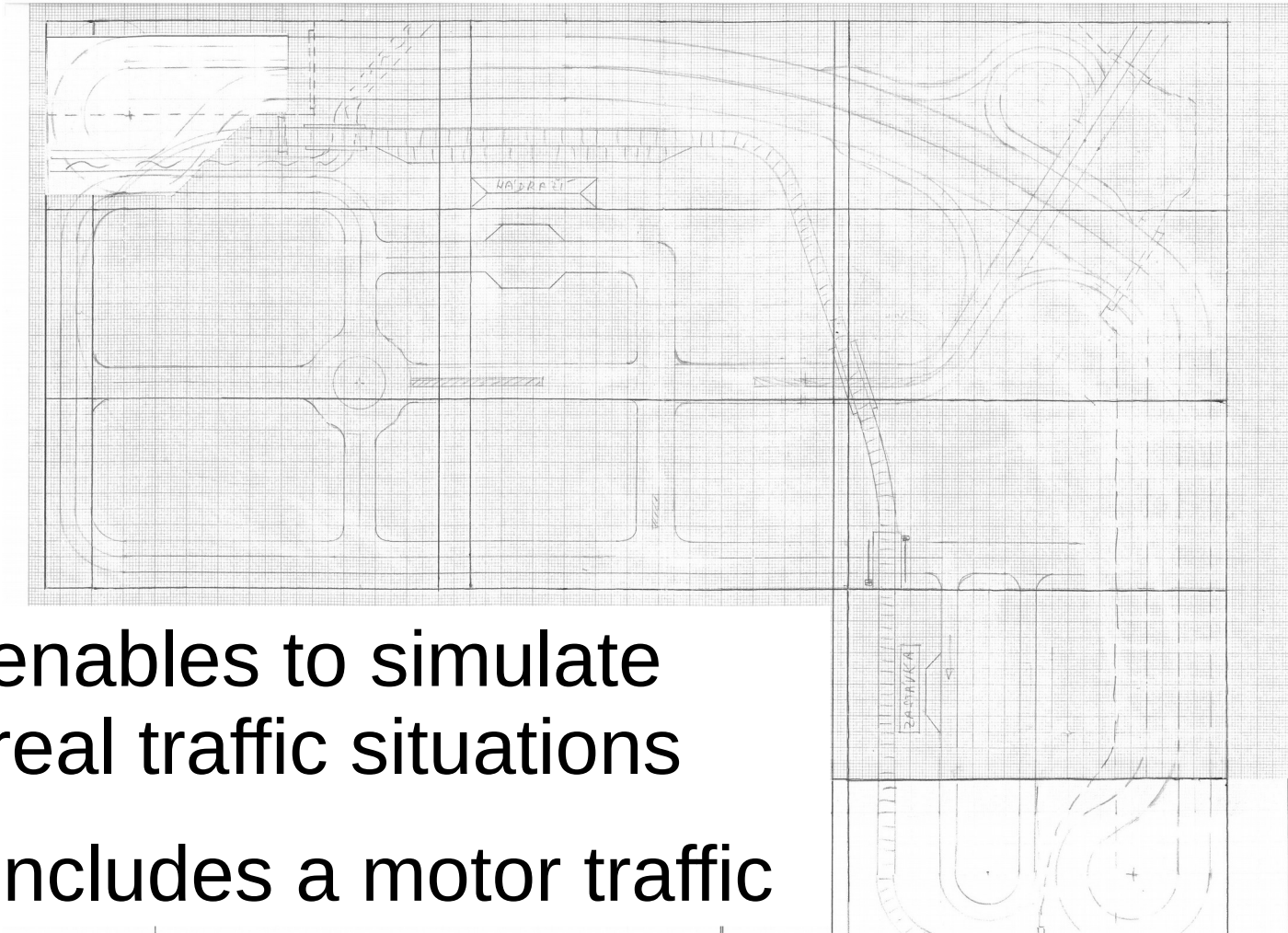
(presetting for automatic operation)

- SW + HW

(programming of different operating situations)

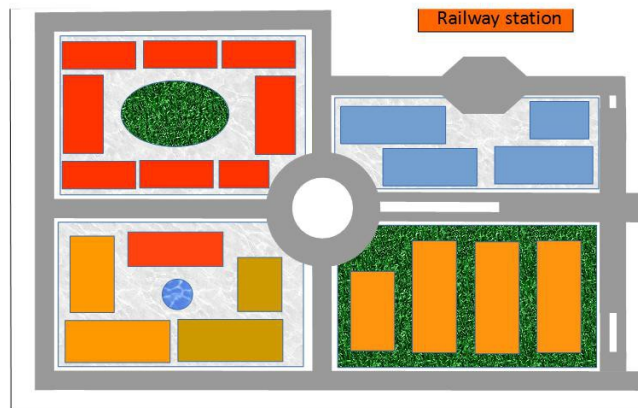


Model Car Transport System



- enables to simulate real traffic situations
- includes a motor traffic

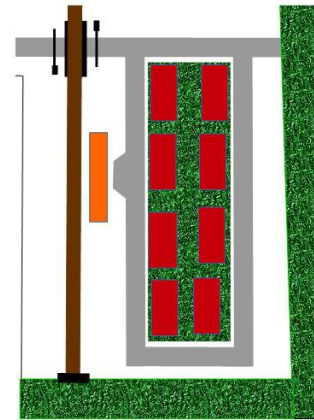
Model Car Transport System



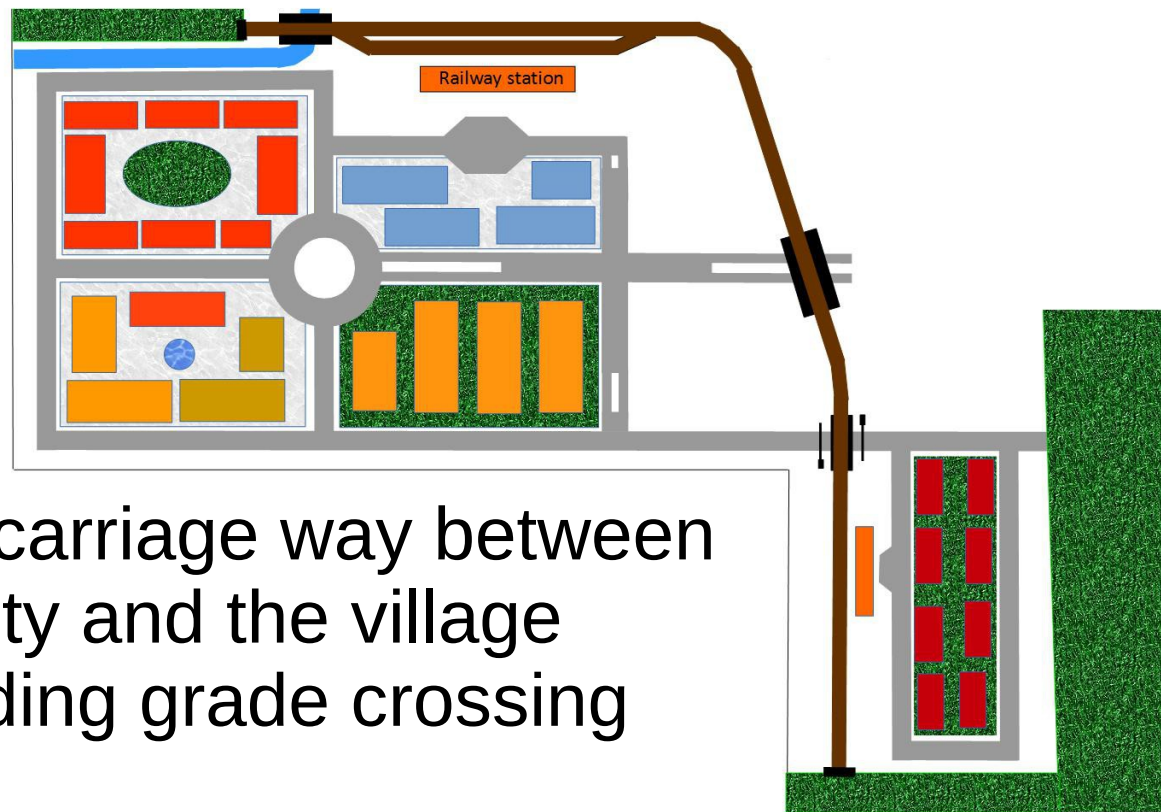
- in a city

Model Car Transport System

- in a small village

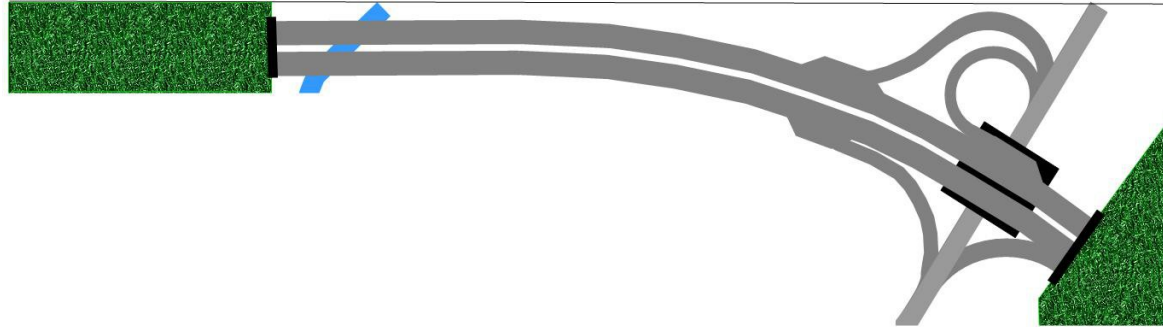


Model Car Transport System



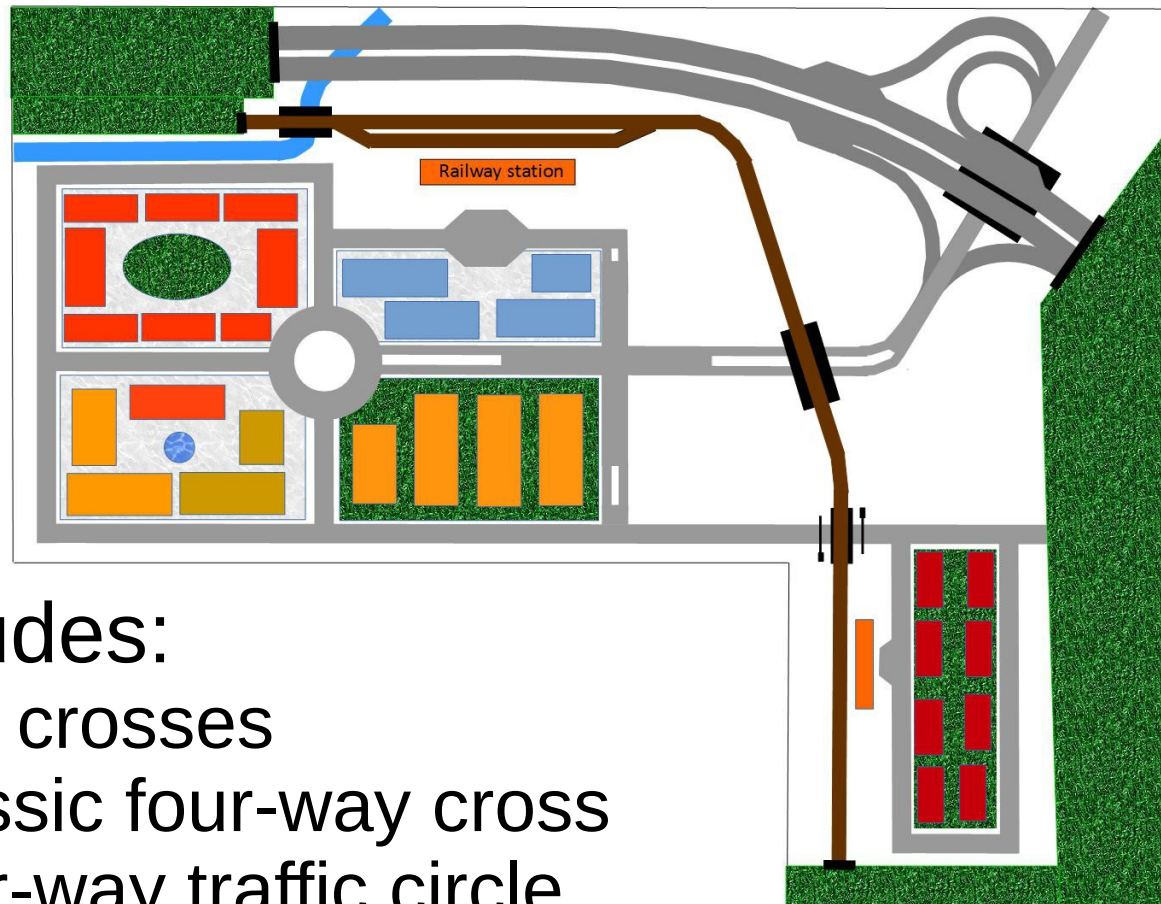
- on a carriage way between the city and the village including grade crossing

Model Car Transport System



- on a highway segment, which includes an elevated crossing with highway approaches and exits

Model Car Transport System



- includes:
 - “T” crosses
 - classic four-way cross
 - four-way traffic circle

Model Car Transport System

Further targets:

- development of own SW in area of Intelligent Transport System
- development of own SW and HW for remote control of model cars on digital base
- creation a sample of Smart City

Model Car Transport System

Conclusion:

- the model
 - is one of important tools, assisting students of Faculty of Transportation Science in their study
 - facilitates understanding matters of Intelligent Transport System and Smart City
 - last but not least enables students to test results of own studies in area of transportation science in practice, namely in development of SW applications and HW devices

Model Car Transport System

Thank you for your attention

I am ready to answer your questions
now or latter on

contacts: bouchkar@fd.cvut.cz, karel.bouchner@seznam.cz